

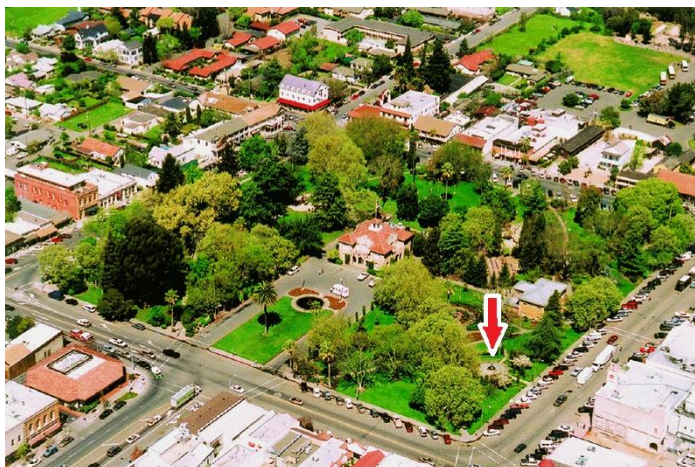
Sonoma Town Square



April 21, 2012

10 am to 1 pm

Sonoma



Paint from 10 am to 1 pm and then meet at the fountain *see arrow in the square directly across the street from the Sebastiani Theater at 476 First St. East, Sonoma. There are nearby picnic tables for a place to have lunch and critique at 1 p.m. Bordering the square are picturesque buildings, shops and old movie theatre. The Sonoma Mission is across from the northeast corner of the square. Also across the street is an historic museum. We will ask for a volunteer to write the article for the newsletter about the day and we'll take pictures of all of the paintings for the newsletter and CWA's [Facebook page photo gallery](#).

From Oakland/Berkeley

Take I-580 to Richmond/San Rafael Bridge (toll fee).

Take 101 North towards San Rafael/Novato and go 9 miles.

Take CA-37 East exit towards Napa/Vallejo and drive 7 miles.

At Sears Point, bear left on Hwy 121 (Arnold Drive) toward Napa/Sonoma.

Go 6.5 miles passing Viansa Winery.

Turn Right on Bonneal Road, at first signal after Viansa. You will see Boyse Hot Springs sign.

Turn left on Hwy 12 and into Sonoma from the south end.

There is all-day parking lot behind Mission.

Alternative Route from Oakland/Berkeley

Take I-80 East towards Sacramento.

Cross the Carquinez Bridge (toll fee).

Approximately 2 miles from the Bridge, take Hwy 37 exit.

Go approx. 2 miles and turn right onto Hwy 20 towards Sonoma.

Pass Domaine Cameros and go down a long hill.

Bear right onto Napa Road (just before the stop light).

Go several miles and then turn right on Boradway.

It will take you to the Town Square.

Additional Information

An alternative and more scenic route for those coming from Contra Costa is to stay on Hwy 37 all the way to 121 where they turn right, go past Viansa and head up to Sonoma as described above.

Don't miss wonderful watercolor exhibition at Sonoma Mission.